

TRANSFORMER-LIFE-MANAGEMENT
CONFERENCE

Neue Trends der Diagnose an Transformatoren und zugehörigen Komponenten

Dr. Michael Krüger Omicron

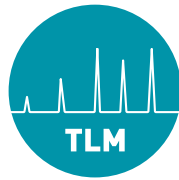


Michael Krüger ist PRINCIPAL ENGINEER bei OMICRON electronics GmbH in Klaus, Österreich. Er studierte Elektrische Energietechnik an der RWTH Aachen und an der Universität Kaiserslautern.

Im Jahr 1990 wurde er an der TU Wien zum Dr. techn. promoviert. Michael Krüger hat mehr als 35 Jahre Erfahrung auf dem Gebiet der Mess- und Prüftechnik von Schaltanlagen, Messwandlern, Transformatoren und rotierenden elektrischen Maschinen.

Er ist Mitglied im VDE, bei der Cigre und beim IEEE und arbeitet in mehreren Working Groups von ÖVE, Cigre und IEC mit.





TRANSFORMER-LIFE-MANAGEMENT
CONFERENCE

Neue Trends der Diagnose an Transformatoren und zugehörigen Komponenten

Transformer Life Management Symposium Merseburg 2015

M. Krüger, OMICRON, Klaus, Austria
michael.krueger@omicron.at

S. Hoek, OMICRON Energy, Berlin, Germany
stefan.hoek@omicron.at

NEW TRENDS OF DIAGNOSIS ON POWER TRANSFORMERS AND ASSOCIATED COMPONENTS

NEUE TRENDS DER DIAGNOSE AN TRANSFORMATOREN UND ZUGEHÖRIGEN KOMPONENTEN

ABSTRACT

With advancing age of power transformers, a regular check of the operative condition becomes more and more important. The Dissolved Gas Analysis (DGA) is a proven and meaningful method such that if increased proportions of H₂ and hydrocarbon gases are found in the oil, the fault must be located. In order to find out the reason for high gas rates, further tests have to be performed. Common methods are: winding resistance measurement (static), On-Load Tap Changer (OLTC) test (dynamic resistance test), turns ratio and excitation current measurement, measurement of the leakage reactance and the measurement of capacitances and dielectric losses.

Innovative new tools like the Dielectric Response Analysis with Polarisation-Depolarisation Current (PDC) and Frequency Response Spectroscopy (FDS), the measurement of the transfer function with the Frequency Response Analysis (FRA), capacitance and dissipation factor measurement at different frequencies and the Partial Discharge (PD) measurement with modern synchronous multi-channel and multi-frequency PD systems enable more detailed diagnostic measurements on

transformers. For the assessment of the danger potential of PD in transformers the knowledge of the location of the PD faults is essential. A powerful tool for PD location is the acoustical measurement with ultrasonic microphones together with UHF triggering.

The paper describes all these new methods and illustrates them with practical case studies for the diagnosis and fault finding.

Keywords

Frequency response analysis (FRA), dielectric response measurement with PDC and FDS, partial discharge (PD) measurement with synchronous multi-channels and multi-frequencies technology, combined synchronous PD measurement with conventional electrical, UHF and acoustic sensors, PD location

DIELECTRIC RESPONSE MEASUREMENT

Water in oil-paper-insulations decreases the dielectric withstand strength of the insulation, accelerates cellulose decomposition and causes the



Neue Trends der Diagnose an Transformatoren und zugehörigen Komponenten

emission of bubbles at high temperatures. State of the art for moisture measurements are equilibrium diagrams, where one tries to derive the moisture in the solid insulation (paper, pressboard) from moisture in oil. This method does not deliver very reliable results [1]. To assess the insulation's water content some dielectric diagnostic methods were widely discussed and occasional used during the last decade. The multilayer insulation of common power transformers consists of oil and paper and therefore shows polarization and conductivity effects. Dielectric diagnostic methods work in a range dominated by interfacial polarization at the boarders between cellulose and oil, cellulose conductivity and oil conductivity. Moisture influences these phenomena. Temperature and the insulation construction have a strong impact too [2]. In [3] a comparison of the mentioned methods was analysed. Frequency Domain Spectroscopy (FDS) and Polarization Depolarization Current (PDC) methods give rather reliable results and reflect also the influence of the temperature and the geometry by using an X-Y model. The results of the PDC measurement can be transformed from the time domain into the frequency domain. Although the results of PDC and FDS methods are comparable, both methods have advantages and disadvantages. If the FDS shall be used down to 100uHz, a measuring time of up to twelve hours is needed for one measurement e.g. the insulation gap between HV and LV winding. If also other insulation gaps e.g. HV winding to tank or LV to TV winding shall be measured, even more time is necessary. The PDC measurement needs much less time but is limited to frequencies up to about 1Hz. A new approach combines both methods [4]. The FDS measurement is replaced by the PDC method in the low frequency range and the results are transformed into the frequency domain, whereas the FDS is used for higher frequencies, which can be done rather quickly. Two input channels for simultaneous measurement of two insulation gaps make it even faster. New model curves for aged oil-pressboard insulation, an outcome of a research project at the University of Stuttgart make the results for aged transformers much more reliable compared to the standard model curves for new oil-pressboard insulation which were used up to date.

Onsite measurement on an aged 200 MVA power transformer

The transformer was manufactured in 1977, has a rated power of 200 MVA, a transformation ratio of

231 kV / 115,5 kV / 10,5 kV. The insulation gaps between high voltage and low voltage winding (CHL) and low voltage between low voltage and tertiary winding (CLT) were measured separately. The water content was measured with the described combined method with FDS and PDC. The measured water content was approximately 2,6% for CHL and 2,4% for CLT. It was decided to dry the transformer on site with heated oil and vacuum.

| Measurement | Moisture | tan δ @ 50Hz | Capacitance (C) |
|-------------------|----------|---------------------|-----------------|
| CHL before drying | 2,6% | 0,81% | 12,0551 nF |
| CHL after drying | 1,6% | 0,38% | 11,6719 nF |
| CLT before drying | 2,4% | 0,79% | 14,2284 nF |
| CLT after drying | 1,7% | 0,38% | 13,6873 nF |

Table 1: Results before and after drying

After drying the measurements were repeated. Table 1 shows the moisture and the capacitance and tan δ at 50Hz before and after drying. Figure 1 shows the results in the frequency domain (FDS). The moisture of the insulation gap HV to LV was reduced from 2.6% to 1.6%, the moisture of the insulation gap LV to TV was reduced from 2.4% to 1.7%.

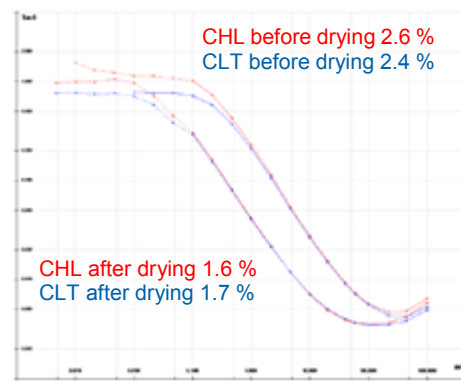


Fig. 1 Water content before and after drying

DISSIPATION FACTOR MEASUREMENT ON HIGH VOLTAGE BUSHINGS

Bushings with high moisture in the insulation show increased 50/60Hz tan δ values particularly at higher temperatures. Figure 2 shows the Dissipation Factor (DF) of OIP bushings at 50Hz for different water contents as function of the temperature [5], in figure 3 it can be seen that the DF at low frequencies

Neue Trends der Diagnose an Transformatoren und zugehörigen Komponenten

is a very sensitive parameter also at ambient temperatures. This is important if measurements are made on built-in bushings which cannot be heated.

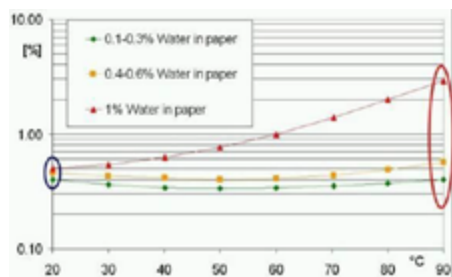


Fig. 2 $\tan \delta (T)$ at 50Hz with different moisture

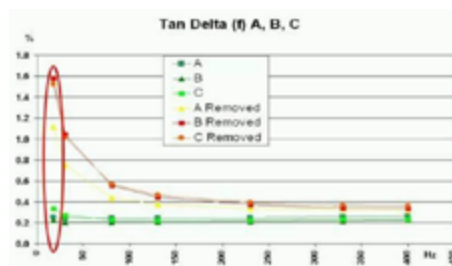


Fig. 3 $\tan \delta (f)$ at 30°C with different moisture

Limits for the dissipation factor

In the existing standards limits are given for 50/60Hz only. The measurement of the dissipation factor at other frequencies should be also included in the standards. Low frequency results (e.g. 15Hz) allow for a very sensitive moisture assessment, measurements at high frequencies (e.g. 400Hz) allow a very sensitive detection of contact problems at the measuring tap or at the layer connections. Also high impedance partial break downs between grading layers can be detected. Table 2 shows indicative limits for new and aged bushings at different frequencies [6]. The indicative limits were extracted out of more than 2000 different measurements. They were calculated as average values plus two times the standard deviation. That means that 95% of the results were below these values [7].

| Frequency | RIP | | OIP | | RBP | |
|-----------|-------|-------|-------|-------|-------|-------|
| | new | aged | new | aged | new | aged |
| 15Hz | <0.6% | <0.7% | <0.5% | <0.7% | <0.7% | <1.5% |
| 50/60Hz | <0.5% | <0.5% | <0.4% | <0.5% | <0.6% | <1% |
| 400Hz | <0.6% | <0.7% | <0.5% | <0.7% | <0.7% | <1.5% |

Table 2 Indicative limits for bushings [6]

FREQUENCY RESPONSE ANALYSIS (FRA)

Sweep Frequency Response Analysis (SFRA) has turned out to be a powerful, non-destructive and sensitive method to evaluate the mechanical integrity of windings and the core within power transformers by measuring the electrical transfer functions over a wide frequency range. This is usually done by injecting a low voltage signal of variable frequency into one terminal of a transformer's winding and measuring the response signal on another terminal (figure 4). This is performed on all accessible windings following according guidelines [8], [9]. The comparison of input and output signals generates a frequency response which can be compared to reference data, to other phases, or to sister transformers. The core-and-winding-assembly of power transformers can be seen as a complex electrical network of resistances, self- and mutual inductances, ground capacitances and series capacitances. The frequency response of such a network is unique and therefore it can be considered as a fingerprint. Geometrical changes within and between the elements of the network cause deviations in its frequency response. Differences between FRA fingerprints and the results of an actual measurement are an indication of positional or electrical variations of the internal components.

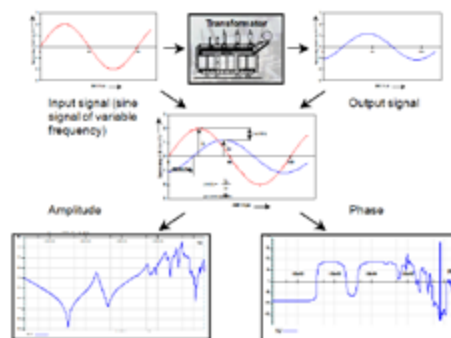
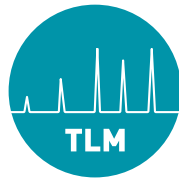


Fig. 4 Principle operation of SFRA



Neue Trends der Diagnose an Transformatoren und zugehörigen Komponenten

Different failure modes affect different parts of the frequency range and can usually be discerned from each other. Practical experiences as well as scientific investigations show that currently no other diagnostic test method can deliver such a wide range of reliable information about the mechanical status of a transformer's active part.

A transformer with 110kV / 30kV was switched off by the differential protection relay after a ground fault in a nearby overhead line. The FRA result is shown in figure 5.

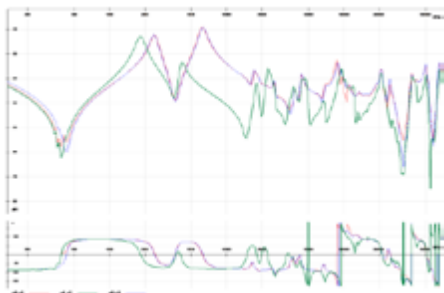


Fig. 5 FRA LV winding x1=red, x2=green, x3=blue

The middle phase x2 (green line) is totally different from x1 (red line) and x3 (blue line). After opening the transformer an interruption of one of the parallel windings was detected (figure 6).



Fig. 6 Interruption in one branch of a LV winding

ELECTRICAL MEASUREMENT OF PARTIAL DISCHARGES

Partial Discharge (PD) measurement is a proven tool for quality control of high voltage apparatus in

the factory and on site. Different PD measuring techniques are using different physical peculiarities of the PD phenomenon, e.g. electric discharge currents according to IEC 60270 [10], gas formation (DGA - dissolved gas analysis), electromagnetic (UHF Measurement) or acoustic radiation in the ultrasonic frequency range. Partial discharge measurements according to IEC60270 standard are often the basis for acceptance tests of the insulation system of high voltage (HV) equipment. Outside screened laboratories PD signals are very often superposed by noise pulses, a fact that makes a PD data analysis more difficult for both human experts and software expert systems. Therefore the handling of disturbances is one of the main tasks when measuring PD. PD measurements are often conducted under noisy conditions. The PD signal is superposed by stochastic noise pulses or even multiple PD sources, which will lead to a complex phase-resolved PD pattern that is not easy to analyse.

Modern methods of data evaluation

A new field of evaluation methods is opened by fully synchronous multi-channel PD instruments in order to gain more reliable measuring results combined with effective noise suppression. A technical overview of the system is given in [11].

Being able to perform synchronous multi-channel PD measurements, the 3-Phase-Amplitude-Relation-Diagram (3PARAD) was introduced as a new powerful analysis tool to distinguish between different PD sources and noise pulses when measuring 3-phase high voltage equipment such as power transformers, rotating machines and cross-bonded cable systems.

PD measurement on a repaired transformer

Figure 7 shows a PD measurement setup with four simultaneously measuring channels which are connected to the three HV bushings and the star point. It can be seen in figure 8 that the three different clusters in the 3PARAD diagram are generated by three different PD sources: statistical noise, pulse disturbances and inner partial discharges. As an enhancement of 3PARAD the 3-Center-Frequency-Relation-Diagram (3CFRD) was introduced as an additional tool for PD data analysis and PD fault separation in real-time on single-phase test objects [12].

Neue Trends der Diagnose an Transformatoren und zugehörigen Komponenten



Fig. 7 PD measurement on a 110kV transformer

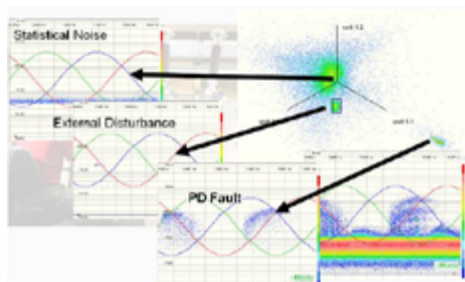


Fig. 8 3PARV filtering on the 110kV transformer

The synchronous consideration of three different frequency parts of the PD spectrum of a single PD pulse provides information on its discharge nature and indicates its possible PD fault location due to PD signal propagation and attenuation. The 3CFRD method requires three different PD band-pass filters, measuring every PD event simultaneously at their predefined centre frequencies. Here the proper selection of these three band-pass positions in the frequency domain is the key to get the optimum benefit from this method. These three filters have to be set in a way that the spectral differences of PD pulses and other pulses are at their maximum. Figure 9 shows the spectra of three PD pulses and the three filters marked as blue bars. The red arrows indicate the absolute charge values of PD pulse 1 (shown in red) at the discrete filter frequencies.

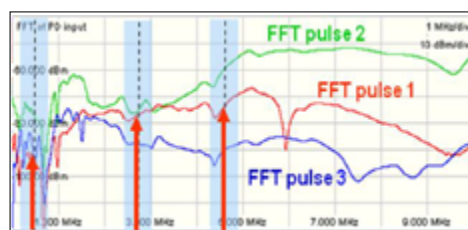


Fig. 9 FFT of three different PD pulses

The charge values are drawn into the star diagram as shown in figure 10. The lengths of the vectors represent the measured charge and the axes indicate the respective filter. By adding the phasors of the PD responses one single dot is the final representation of the initial triplet.

The use of this principle is shown in two examples. The first example is the 3CFRD measurement on a high voltage bushing. Figure 11 shows the phase resolved pattern of different PD sources. The overlaying of different patterns doesn't allow a detailed analysis. Figure 12 shows a separated pattern of one source by 3CFRD filtering.

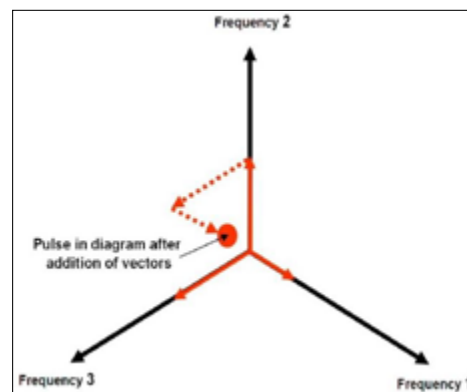


Fig. 10 3CFRD of the red spectrum in figure 9

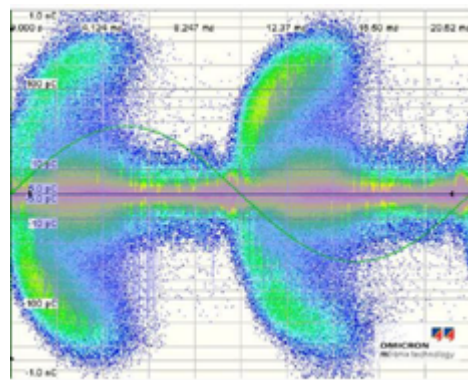


Fig. 11 PRPD pattern without 3CFRD filtering

Neue Trends der Diagnose an Transformatoren und zugehörigen Komponenten

PD measurement on a Dry-Type transformer

A second example for 3CFRD filtering is a measurement on a dry-type cast resin transformer. Figure 13 shows the PRPD at app. 40kV. The noise is about 10pC. An analysis with the 3CFRD is shown in figure 14. The filtered signal (figure 15) shows a clear pattern of internal void discharges with 5pC, although the PD's are below the noise level.

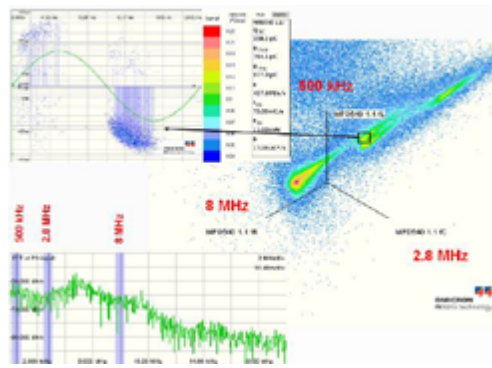


Fig. 12 PRPD of one PD source with 3CFRD filtering

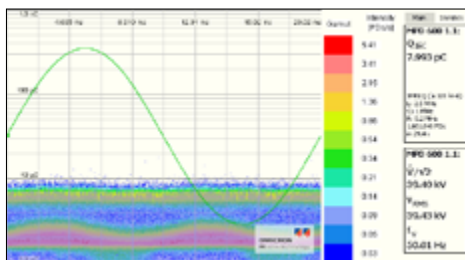


Fig. 13 PRPD of one PD source without 3CFRD filtering

ACOUSTIC PD MEASUREMENT AND LOCATION

The main benefits of acoustic PD measurements are the possibility of localizing the PD source with an accuracy of some ten centimetres. In case of an evidence for PD, the location of the potential PD source can be important to estimate the risk of a complete breakdown. The knowledge of PD location is also crucial for the assessment of the asset and the process of maintenance or repair.

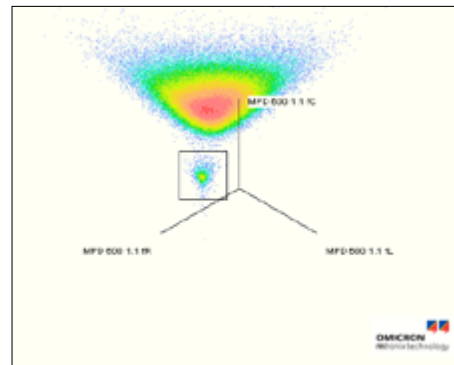


Fig. 14 3CFRD of the measurement in fig. 13

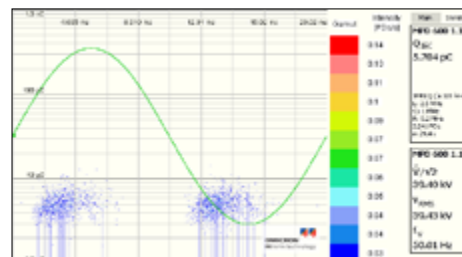


Fig. 15 PD pattern of voids with 3CFRD filtering

The acoustic signals are detected by several ultrasonic sensors on the tank wall of the transformer. The low level of electric interferences from outside the measurement setup constitutes one of the strengths of this method [13].

The propagation behaviour of acoustic PD signals in transformers

The acoustic response of PD inside a transformer is typically measured by piezoelectric sensors in the frequency range of some tens of kHz up to some hundreds of kHz.

Due to the resonant character of the sensors, the measured acoustic PD signal is inherent overlaid by oscillations as illustrated in figure 16. For that reason the determination of the frequency content and proper signal form is difficult. Using the difference in arrival time of the acoustic PD signal at multiple sensors, algorithms compute the location of the PD source. The complex physical processes involved in sound propagation and the

Neue Trends der Diagnose an Transformatoren und zugehörigen Komponenten

large structural differences between different transformers may be challenging during the measurement. The following parameters have to be considered:

- The PD source position and the inner structure of the transformer mainly influence the propagation path.
- More than one propagation path from source to the sensor is possible (direct oil, reflection, steel path).
- The speed of sound depends on the propagation path (crossed medium), the frequency and temperature.
- Depending on the position of the source and the inner structure of the transformer, direct oil paths propagation may prevent a proper measurement by attenuating the signal too much.
- The individual consideration of the measurement setup and the inner structure of the transformer are necessary, and a cautious interpretation of the measurement results by experienced persons is essential.

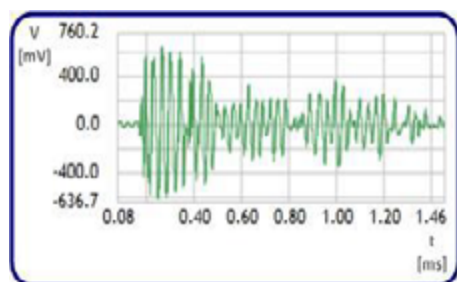


Fig. 16 Acoustical signal from a partial discharge

Figure 17 shows the variation of the velocity of sound in transformer oil for different temperatures. For example, the propagation speed decreases during the heat-up period of the transformer by approximately 15%, from about 1400 m/s at 20 °C to 1200 m/s at 80 degrees Celsius.

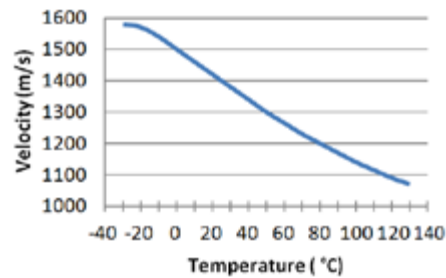


Fig. 17 Dependency of the propagation speed in oil on temperature for 150 kHz

The propagation path is often complex. According to figure 18 multiple propagation paths of the emitted sound wave are possible. Depending on sensor and PD location, multiple acoustic wave components of the same PD event are potentially detected by one sensor and overlay the direct oil signal as illustrated in figure 19. The acoustic wave can be reflected by the tank wall, core, winding, flux shields and other components.

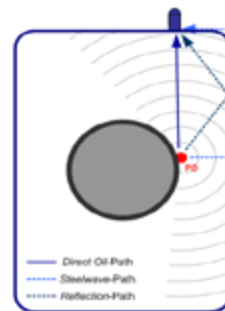


Fig. 18 Propagation paths

The measurable direct oil signal at the sensor position depends on the intensity of the PD event and on the damping in the propagation path. Therefore, the attenuation by core, winding, transformer board, flux shielding etc. should be as low as possible. For that reason, the search for sensor positions that ensure good signal quality is essential during measurement procedure.

Neue Trends der Diagnose an Transformatoren und zugehörigen Komponenten

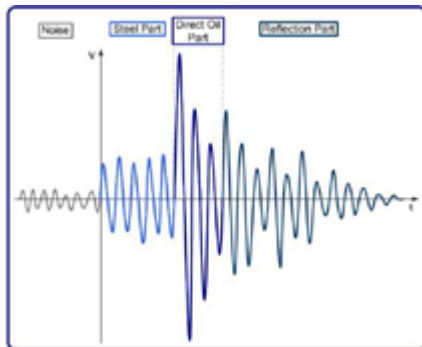


Fig. 19 Acoustic PD signal components according to different propagation paths

The knowledge about the inner structure of the transformer is helpful for a good positioning and repositioning of the sensors.

Localization of PD

Different algorithms can be used to perform a time-based localization of PD. The input information used by the algorithms is the time of arrival of the signals propagating on direct oil path wave at multiple sensors. The exact time of arrival has to be determined by evaluating the measured signal. A criterion for the starting point can be found e.g. by investigation of energy steps [14] or by threshold criteria.

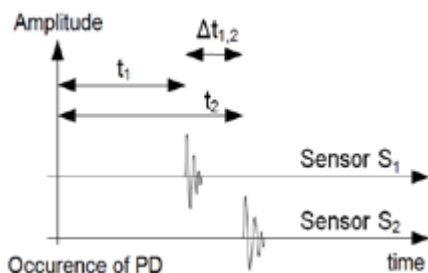


Fig. 20 Absolute and relative times in a two-sensor-setup

The relative arrival times at different sensor positions lead to time differences ($\Delta t_{1,2}$). These time lags are the only available data in all-acoustic measurements, when the data acquisition is triggered by the acoustic signal at one of the sensors. If the time delay between occurrence of a

PD and the arrival of the associated acoustic wave is available, the absolute propagation times (t_1 , t_2) from source to sensor can be used for localization (figure 20). The exact timing of the emission of the PD signal can be estimated e.g. by an electrical PD measurement according to IEC 60270 or a measurement in the ultra-high frequency (UHF) range. In the latter case, sensors within the transformer walls can be used to collect the high frequency electromagnetic wave that is emitted during PD. The principle and a measurement setup are shown in figures 21, 22 and 23.

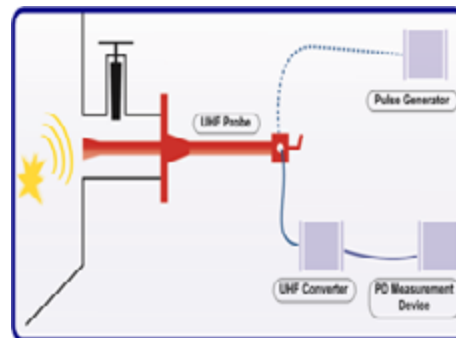


Fig. 21 UHF sensor setup for triggering



Fig. 22 UHF sensor mounted on the main drain valve

The distance between sensor and source is calculated using the available absolute or relative propagation times and an assumptive average propagation speed. With the determined distances and the sensor positions a geometrical localization of the PD source can be performed in several steps. Another advantage of the UHF triggering is the possibility of using average out of many equally triggered signals to reduce the randomly occurring noise [13].

Neue Trends der Diagnose an Transformatoren und zugehörigen Komponenten

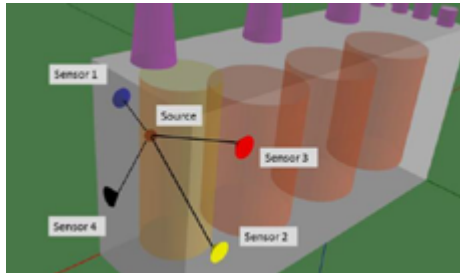


Fig. 23 Piezoelectric sensors on the tank wall

Case Study

A new transformer showed a strong increase of Hydrogen within a few weeks. The result of the acoustic PD location is shown in figure 24. An internal support of the tap changer was touching the OLTC compartment. This caused surface discharges which could be detected acoustically on the tank wall.

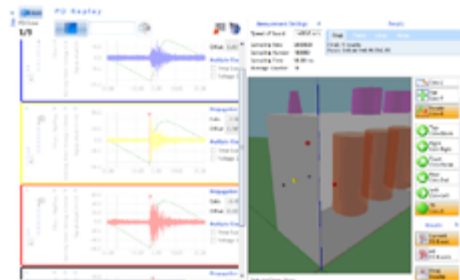


Fig. 24 Acoustic PD location with 4 microphones

tap has a very low inductance, therefore also transient over-voltages on the high voltage side of the bushing can be used to detect transient over-voltages. Very Fast Transient (VFT) over-voltages can harm the insulation in the bushing and in the transformer insulation. Figure 25 shows a partial breakdown between grading layers in a Resin Impregnated Paper (RIP) bushing caused by VFT voltages.

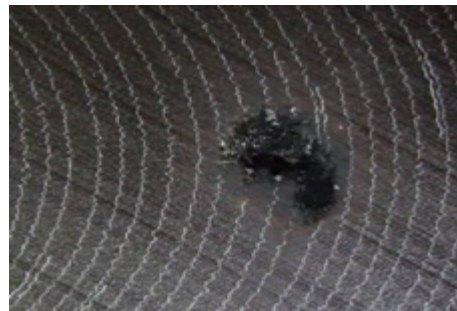


Fig. 25 Partial breakdown between grading layers

ON-LINE MEASUREMENT OF PD, CAPACITANCE & DISSIPATION FACTOR AND TRANSIENT OVER-VOLTAGES ON HIGH VOLTAGE BUSHINGS

Compared to offline measurements online monitoring systems have the advantage that the measurements are taken under real operation conditions like nominal voltage, actual load and actual temperature. The measuring tap of transformer bushings can be used to measure partial discharges in the bushings and in the transformer and the capacitance and dielectric dissipation factor of the bushings. The capacitance C_1 between the inner conductor of a bushing and the measurement

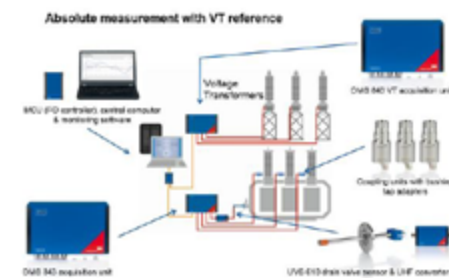


Fig. 26 Bushing monitoring system MONTRANO

Figure 26 shows a scheme of the monitoring system MONTRANO. It was mounted on an old 220kV transformer which showed high contents of Hydrogen and Methane. This systems can measure partial discharges at the measuring taps of the bushings and at UHF sensors inside the transformer tank. It can capture transient over-voltages at the bushings and can also measure the capacitance and the dielectric dissipation factor of the bushings by taking the reference signals from voltage transformers which are located close to the bushings. After half a year the Hydrogen increased from 500 ppm to 1200 ppm within less than three months (table 3). Also the values for CO and CO₂ increased strongly.

Neue Trends der Diagnose an Transformatoren und zugehörigen Komponenten

The monitoring system showed an increase of

| Sampling date | H ₂ | CO | CO ₂ | CH ₄ | C ₂ H ₂ | C ₂ H ₄ | C ₂ H ₆ |
|---------------|----------------|-----|-----------------|-----------------|-------------------------------|-------------------------------|-------------------------------|
| 01-Apr | 576 | 557 | 3821 | 150 | 11 | 116 | 19 |
| 15-Apr | 433 | 416 | 3016 | 115 | 9 | 92 | 15 |
| 15-May | 966 | 835 | 5952 | 226 | 21 | 179 | 32 |
| 12-Jun | 1212 | 808 | 5797 | 225 | 21 | 171 | 30 |

Table 3 Gas values

partial discharges particularly at the bushings of phases V and W (figure 27). The left pictures in figure 27 show the PD patterns in April the right ones of phase V in July and of phase W in August.

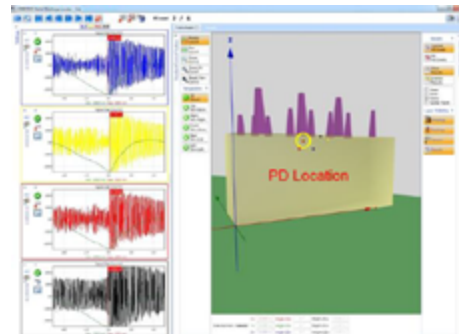


Fig. 29 Location of one PD source at V

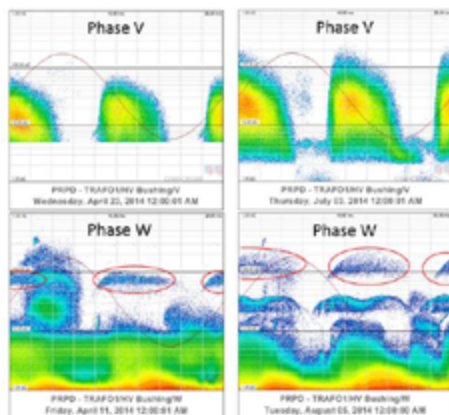


Fig. 27 Increase of PD at phases V and W

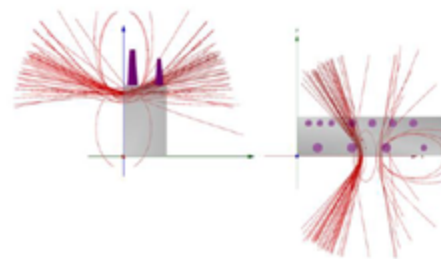


Fig. 30 Location of PD at V and W



Fig. 28 PD locator PDL600

The transformer was taken out of service to investigate the reason for this behaviour. The fault could be located with the acoustic PD system PDL600 (figure 28) at the oil end of the V and W bushings (figures 29 and 30). The bushings were removed and the damage at the leads between windings and bushing could be seen (figure 31).

Due to partial discharges, X-wax was produced at the insulation paper and inside the windings. X-wax is a solid material which is formed from mineral oil as a result of electrical discharges and which consists of polymerized fragments of the molecules of the oil. If it is built inside the oil ducts, the cooling of the transformer can be blocked.



Fig. 31 X-wax at the high voltage leads

A repair of these faults would have meant that the transformer had to be rewound at least partially, at worse completely. Due to the age - the transformer was built in 1967 - and its condition it was decided to scrap it prior any hazard in service.

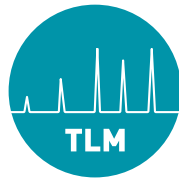


TRANSFORMER-LIFE-MANAGEMENT CONFERENCE

Neue Trends der Diagnose an Transformatoren und zugehörigen Komponenten

REFERENCES

- [1] M. Koch "Improved Determination of Moisture in Oil-Paper-Insulations by Specialised Moisture Equilibrium Charts" Proceedings of the XIVth International Symposium on High Voltage Engineering, p. 508, Beijing, China, 2005
- [2] M. Koch "Water in Power Transformers"OMICRON Workshop Diagnostic Measurements on Power Transformers, Klaus, Austria 2006
- [3] M. Koch, K. Feser "Reliability and Influences on Dielectric Diagnostic Methods to Evaluate the Ageing State of Oil-Paper-Insulations" APTADM Wroclaw 2004
- [4] H. Borsi, E. Gockenbach, M. Krüger "Method and apparatus for measuring a dielectric response of an electrical insulating system" US2006279292
- [5] ABB, "Dissipation factor over the main insulation on high voltage bushings", product information, ABB 2002
- [6] Cigre brochure 445 "Guide for Transformer Maintenance", Cigre 2011, ISBN: 978-2-85873-134-3
- [7] M.Krüger, A. Kraetge, M. Koch, K. Rethmeier et al. „New Diagnostic Tools for High Voltage Bushings“, Cigre VI Workspot, Foz do Iguacu, April 2010
- [8] Cigre brochure 342 "Mechanical condition assessment of transformer windings using frequency response analysis (FRA)", Cigre 2008, ISBN: 978-2-85873-030-8
- [9] IEC 60076-18 "Power transformers – Part 18: measurement of frequency response" Edition 1.0 2012-07
- [10] IEC 60270 (2000) „High-voltage test techniques - Partial discharge measurements“, International Electrotechnical Commission, Publication 60270, 2000
- [11] K. Rethmeier, M. Krüger, A. Kraetge, R. Plath, W. Koltunowicz, A. Obralic, W. Kalkner, "Experiences in On-site Partial Discharge Measurements and Prospects for PD Monitoring", CMD Beijing 2008
- [12] K. Rethmeier, A. Obralic, A. Kraetge, M. Krüger, W. Kalkner, R. Plath. "Improved Noise Suppression by real-time pulse-waveform analysis of PD pulses and pulse-shaped disturbances", International Symposium on High Voltage on High Voltage Engineering (ISH), Cape Town, August 2009
- [13] S. Hoek, R. Hummel et al. "Localizing partial discharge in power transformers by combining acoustic and different electrical methods", Conference Record of the 2012 IEEE International Symposium on Electrical Insulation (ISEI), San Juan, Puerto Rico, USA
- [14] Große, C.U.; Reinhardt, H.-W.; „Schallemissionsquellen automatisch lokalisieren“ MP Materialprüfung, Jahrg. 41 pp. 342, Carl Hanser Verlag, München 1999



TRANSFORMER-LIFE-MANAGEMENT CONFERENCE

Neue Trends der Diagnose an Transformatoren und zugehörigen Komponenten

ZUSAMMENFASSUNG

Mit zunehmendem Alter eines Leistungstransformators wird eine regelmäßige Kontrolle der Betriebs-tüchtigkeit immer wichtiger. Die Gas-in-Öl-Analyse ist eine erprobte und aussagefähige Methode. Wenn beispielsweise erhöhte Werte für Wasserstoff und Kohlenwasserstoffgase im Öl detektiert werden, müssen Fehlerursachen gesucht und der Fehler sobald wie möglich gefunden werden. Um derartige Fehler herauszufinden und zu lokalisieren werden zahlreiche verschiedene elektrische Messmethoden angewandt. Neuartige Messverfahren wie die Frequency Response Analyse FRA, dielektrische Antwortmessungen mit FDS und PDC und Teilentladungsmessungen mit modernen synchronen Mehrkanalsystemen ermöglichen eine detailliertere Diagnostik an Transformatoren. Teilentladungsmessungen an Transformatoren waren in der Vergangenheit nur in geschirmten Prüffeldern sinnvoll möglich, z.B. beim Hersteller während der Endprüfung. Moderne digitale Messtechnik und neue Verfahren und Algorithmen haben es möglich gemacht, Teilentladungen (TE) auch vor Ort mit ausreichender Empfindlichkeit und Störunterdrückung zu messen und zu orten. Als wichtige Werkzeuge sind dabei die 3-Phase-Relation-Diagram-Filterung (3PAR) und die 3-Centre-Frequency-Relation-Diagram-Filterung (3CFRD) zu nennen. Auch die Triggerung von akustisch gemessenen Signalen durch elektrische Signale von den Durchführungen oder von den UHF Signalen, die mit speziellen Sonden aus dem Tank ausgekoppelt werden, haben neue Möglichkeiten geschaffen. Die digitale Messtechnik hat es auch ermöglicht, on-line Verlustfaktormessungen und die Messung schneller transients Überspannungen zu integrieren.

BIOGRAPHIES



Michael Krüger is Principal Engineer at OMICRON electronics GmbH, Austria with special focus on testing and diagnosis of electric power equipment. He studied electrical engineering at the University of Aachen (RWTH) and the University of Kaiserslautern (Germany) and graduated in 1976 (Dipl.-Ing.). In 1990 he received the Dr. techn. degree from the University of Vienna. Michael Krüger has more than 35 years of experience in high voltage engineering and insulation diagnosis. He is member of VDE, Cigre and IEEE and works in several working groups of OEVE, IEC and Cigre.



Stefan Hoek is with OMICRON Energy Solutions, Berlin since 2008. He works as product manager with main focus on partial discharge analysis. He studied electrical engineering at the University Stuttgart (Germany) and worked as research assistant at the Institute of High Voltage Technologies (IEH). His research focus was on partial discharge localization in GIS with help of measurements in the UHF range. 2014 he received the Dr.-Ing. degree from the University Stuttgart. He works in different Cigre working groups.

